

In 2010...

Watch out for presentations about the CPC Program, the launch of CIPHI's new website and a CPC online self assessment tool!

Who Should Participate?

You! Environmental Public Health Professionals who wish to maintain their designation must participate in the program. This includes:

- ✓ Generalists and specialists
- ✓ Public/Private industry practitioners
- ✓ Traditional/non-traditional practitioners

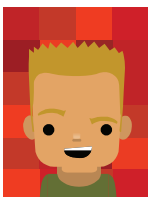
Additional Resources

For more information make sure that you:

- ✓ Contact us at cpcprogram@ciphi.ca with any questions about the program
- ✓ Take a look at the CPC Program Reference Guide which is sent out to CIPHI members and can be found electronically on CIPHI's website (www.ciphi.ca)
- ✓ Follow CIPHI on Twitter at twitter.com/ciphi_cpc
- ✓ Become a friend of the new "CIPHI Continuing Professional Competencies" Facebook site at www.facebook.com



Wow! This sounds great!



It is very exciting. I can't wait to get started!

The Canadian Institute of Public Health Inspectors

Website

<http://www.ciphi.ca/>

General Email

office@ciphi.ca

CPC Program Email

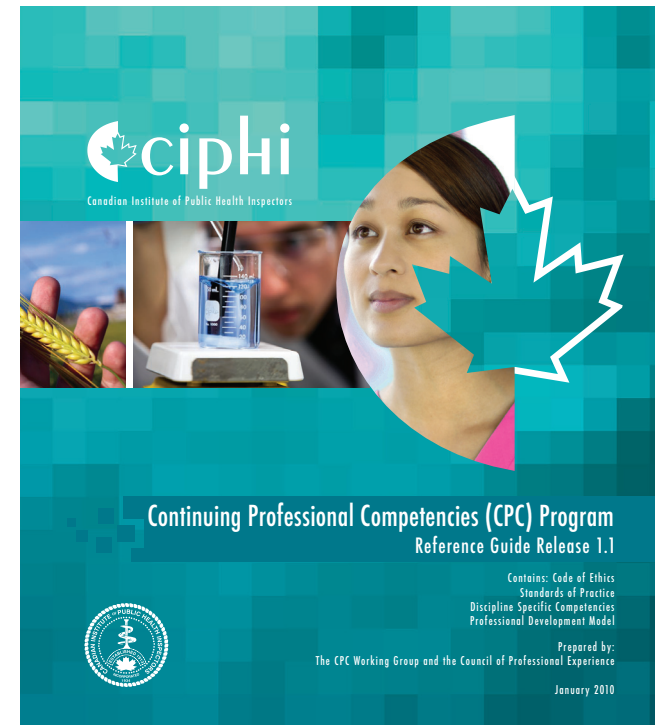
cpcprogram@ciphi.ca

Regular Mail

720 - 999 West Broadway
Vancouver BC V5Z 1K5



Continuing Professional Competencies Program



Evolving Environmental Public Health in Canada

Commencing January 2010!



I've been hearing a lot about the new CIPHI CPC Program. Do you know what it's all about?



Of course!

The CPC Program will be significant in **enhancing the recognized status of Environmental Public Health Professionals** as specialized professionals who are essential in protecting the health of Canadians!

Benefits

The program will allow us to improve recognition and credibility as a profession. It will also help to create consistency across the profession, aid in workforce development, and provide a framework for planning your career.

As a participant in the CPC Program, you will be able to:

- ✓ Assess your skills, knowledge and abilities using a set of **discipline specific competencies**
- ✓ Direct and diversify your professional development using a **professional development model**
- ✓ Guide your career and promote our profession using **national standards of practice and a code of ethics**



Step by Step

The CPC Program involves five steps:

1. Use the defined competencies to conduct a self assessment (using the online tool) and to determine development opportunities
2. Identify learning objectives and development goals
3. Review CIPHI's PD requirements
4. Put learning plan into action – collect PDHs
5. Submit PDHs through the CIPHI membership site

Tools

CIPHI has developed several tools to support your participation in the CPC Program:

- ✓ A Self Assessment worksheet has been created to guide you in reflecting on your professional practice and evaluating your discipline-specific competencies. It will also help you to identify learning and professional development opportunities.
- ✓ The Detailed Activity Record allows you to track and record your professional development activities and PDHs.

Both of these tools are currently available to download in MS Word format on the CIPHI website. Online, web-based versions of both tools are currently under development and will be available on the CIPHI website by mid-year 2010.

Competencies

Competencies are a combination of applied knowledge, skills, and abilities needed to conduct a role of function.

CIPHI has developed a set of **discipline specific competencies** for Environmental Public Health. These competencies describe the essential knowledge, skills and abilities necessary for continued development after receiving the Certificate in Public Health Inspection (Canada), CPHI(C).

CIPHI's competencies cover eight areas:

- ✓ Public Health Sciences
- ✓ Assessment & Analysis
- ✓ Policy Program Planning, Implementation & Evaluation
- ✓ Partnerships, Collaborations & Advocacy
- ✓ Diversity & Inclusiveness
- ✓ Communication
- ✓ Leadership
- ✓ Legal & Regulatory

Professional Development (PD) Model

CIPHI's PD Model was developed by the CPC Working Group and Interim Council of Professional Experience. As part of the CPC Program, you will collect 80 professional development hours (PDHs) a year. These PDHs include hours worked in the profession (on the job hours) and any combination of activities such as mentoring, courses, conferences, and research activities.

The PD requirements may seem high at first glance, but there are exemptions for leaves of absence, retirement and when resuming active practice. There will also be a depot of available continuing education courses and flexibility on how to gather PDHs.